

# The little dippers: transits of star-grazing exocomets?

M. Ansdell<sup>1b</sup>,<sup>1,2</sup>★ E. Gaidos<sup>1b</sup>,<sup>3</sup> T. L. Jacobs,<sup>4</sup> A. Mann,<sup>5,6</sup> C. F. Manara,<sup>7</sup>  
G. M. Kennedy<sup>1b</sup>,<sup>8,9</sup> A. Vanderburg,<sup>10†</sup> M. Kenworthy<sup>1b</sup>,<sup>11</sup> T. Hirano,<sup>12,13</sup>  
D. M. LaCourse,<sup>14</sup> C. Hedges<sup>15</sup> and A. Frasca<sup>16</sup>

<sup>1</sup>Center for Integrative Planetary Science, University of California at Berkeley, Berkeley, CA 94720, USA

<sup>2</sup>Department of Astronomy, University of California at Berkeley, Berkeley, CA 94720, USA

<sup>3</sup>Department of Earth Sciences, University of Hawai‘i at Mānoa, Honolulu, HI 96822, USA

<sup>4</sup>Amateur Astronomer, 12812 SE 69th Place, Bellevue, WA 98006, USA

<sup>5</sup>Department of Astronomy, Columbia University, 550 West 120th Street, New York, NY 10027, USA

<sup>6</sup>Department of Physics and Astronomy, University of North Carolina at Chapel Hill, Chapel Hill, NC 27599-3255, USA

<sup>7</sup>European Southern Observatory, Karl-Schwarzschild-Str 2, D-85748 Garching bei München, Germany

<sup>8</sup>Department of Physics, University of Warwick, Gibbet Hill Road, Coventry CV4 7AL, UK

<sup>9</sup>Centre for Exoplanets and Habitability, University of Warwick, Gibbet Hill Road, Coventry CV4 7AL, UK

<sup>10</sup>Department of Astronomy, The University of Texas at Austin, Austin, TX 78712, USA

<sup>11</sup>Leiden Observatory, Leiden University, Niels Bohrweg 2, NL-2333 RA Leiden, the Netherlands

<sup>12</sup>Department of Earth and Planetary Sciences, Tokyo Institute of Technology, 2-12-1 Ookayama, Meguro-ku, Tokyo 152-8551, Japan

<sup>13</sup>Institute for Astronomy, University of Hawai‘i at Mānoa, Honolulu, HI 96822, USA

<sup>14</sup>Amateur Astronomer, 7507 52nd Place NE, Marysville, WA 98270, USA

<sup>15</sup>NASA Ames Research Center, Moffett Blvd, Mountain View, CA 94035, USA

<sup>16</sup>INAF – Osservatorio Astrofisico di Catania, via S. Sofia, 78, I-95123 Catania, Italy

Accepted 2018 November 29. Received 2018 November 27; in original form 2018 October 8

## ABSTRACT

We describe EPIC 205718330 and EPIC 235240266, two systems identified in the *K2* data whose light curves contain episodic drops in brightness with shapes and durations similar to those of the young ‘dipper’ stars, yet shallower by  $\sim 1$ – $2$  orders of magnitude. These ‘little dippers’ have diverse profile shapes with durations of  $\simeq 0.5$ – $1.0$  d and depths of  $\simeq 0.1$ – $1.0$  per cent in flux; however, unlike most of the young dipper stars, these do not exhibit any detectable infrared excess indicative of protoplanetary discs, and our ground-based follow-up spectra lack any signatures of youth while indicating that these objects are kinematically old. After ruling out instrumental and/or data processing artefacts as sources of the dimming events, we investigate possible astrophysical mechanisms based on the light curve and stellar properties. We argue that the little dippers are consistent with transits of star-grazing exocomets, and speculate that they are signposts of massive non-transiting exoplanets driving the close-approach orbits.

**Key words:** comets: general – minor planets, asteroids: general – stars: individual: (EPIC 205718330 and EPIC 235240266) – planetary systems – stars: variables: general.

## 1 INTRODUCTION

The space-based *Kepler* mission (Borucki 2016) and its *K2* successor (Howell et al. 2014) have provided ultra-precise time-series photometry for hundreds of thousands of nearby stars. Light curves from these missions have been used to identify thousands of close-in transiting exoplanets (Batalha et al. 2013; Crossfield et al. 2016; Mann et al. 2017) and also study other types of circumstellar mate-

rial around young stellar objects (e.g. Ansdell et al. 2016b; Stauffer et al. 2017; Cody & Hillenbrand 2018), main-sequence stars (e.g. Boyajian et al. 2016; Rappaport et al. 2018), and even white dwarfs (e.g. Vanderburg et al. 2015).

In particular, the so-called ‘dipper’ stars are young ( $\lesssim 10$  Myr), K/M-type pre-main-sequence stars that exhibit deep ( $\gtrsim 10$  per cent) and moderate-duration ( $\sim 0.5$ – $2.0$  d) drops in brightness with diverse time profiles (e.g. see fig. 4 in Ansdell et al. 2016b) that can appear quasi-periodically or aperiodically (e.g. see fig. 3 in Ansdell et al. 2016b) as well as episodically (e.g. Scaringi et al. 2016). Although the first known dippers (e.g. AA Tau; Bouvier et al. 1999) were discovered from the ground, and later with the

\* E-mail: [ansdell@berkeley.edu](mailto:ansdell@berkeley.edu)

† NASA Sagan Fellow.

CoRoT and *Spitzer* space missions (Alencar et al. 2010; Morales-Calderón et al. 2011; Cody et al. 2014), *K2*'s survey of nearby star-forming regions has greatly expanded studies of these objects (Ansdell et al. 2016a,b; Scaringi et al. 2016; Bodman et al. 2017; Cody & Hillenbrand 2018; Hedges, Hodgkin & Kennedy 2018). The dipper phenomenon is thought to be due to transits of circumstellar dust, likely related to primordial circumstellar discs, as these objects nearly all have clear infrared excesses and often exhibit line emission related to accretion (Ansdell et al. 2016b). Moreover, simultaneous optical and near-infrared time-series photometry has shown that the dips can be shallower at longer wavelengths, consistent with extinction by optically thin dust (Morales-Calderón et al. 2011; Cody et al. 2014; Schneider et al. 2018).

The unprecedented precision of *Kepler* has also enabled detection of very shallow ( $\lesssim 1$  per cent) flux dips in the light curves of two F2V main-sequence stars, KIC 3542116 and KIC 11084727 (Rappaport et al. 2018). These dimming events occur aperiodically and have shapes characteristic of trailing dust tails (i.e. asymmetric shapes with steep ingresses and slower egresses; Lecavelier Des Etangs, Vidal-Madjar & Ferlet 1999), thus have been explained in terms of transits of remnant circumstellar planetesimals, namely 'exocomets' (Rappaport et al. 2018). KIC 3542116 exhibited six  $\simeq 0.05$ – $0.1$  per cent dips in its *Kepler* light curve, each lasting  $\simeq 0.5$ – $1.0$  d, while KIC 11084727 had a single similarly shaped transit. Rappaport et al. (2018) did not report any detectable infrared excess or other signatures of stellar youth for KIC 3542116 and KIC 11084727. Similarly, the F3 V/IV star KIC 8462852 (Boyajian's star; Boyajian et al. 2016) lacks detectable infrared excess or signatures of youth, yet exhibits both shallow ( $\sim 1$  per cent) and deep ( $\sim 20$  per cent) flux drops with irregular shapes and typical durations of a few days. A variety of mechanisms have been invoked to explain KIC 8462852's dimming events, such as collisions of large bodies, a family of exocomet fragments, and a dusty debris ring (Boyajian et al. 2016; Katz 2017; Wyatt et al. 2018). Regardless of the mechanism, the dips are likely caused by dusty material, as multiband photometric monitoring from the ground has shown that the dips have a wavelength dependence consistent with extinction by optically thin sub- $\mu\text{m}$  dust (Bodman et al. 2018).

Here we present two systems, EPIC 205718330 and EPIC 235240266, which also do not exhibit any detectable infrared excesses or other signatures of youth, yet show very shallow ( $\simeq 0.1$ – $1$  per cent) episodic dips in their *K2* light curves that last  $\simeq 0.5$ – $1.0$  d. What sets these apart from the aforementioned exocomet systems is that most of the observed dips do *not* have the typical profiles of trailing dust tails; rather, the dip profiles have a variety of shapes (symmetric, leading-tail, complex) remarkably similar to those seen in the young dipper systems, but an order of magnitude shallower. In this work, we analyse the *K2* light curves and follow-up observations of these two 'little dippers'. In Section 2, we present the available data for EPIC 205718330 and EPIC 235240266, including their *K2* light curves and all-sky survey photometry, as well as our follow-up spectra and adaptive optics imaging. The stellar and dip properties of the little dippers are derived from these data in Section 3. We discuss possible mechanisms for the dimming events in Section 4 and summarize our work in Section 5.

## 2 DATA

### 2.1 *K2* light curves

EPIC 205718330 and EPIC 235240266 were discovered during a visual re-survey of *K2* light curves, focused on finding dipper stars

that were outside of the constraints used in the original survey (e.g. requiring at least five  $> 10$  per cent flux dips in the 80-d *K2* campaign; Ansdell et al. 2016b) while also including data from newly released *K2* campaigns (up until Campaign 17). The search was conducted using LCTOOLS,<sup>1</sup> a free and publicly available software program that provides a set of applications for efficiently building and visually inspecting large numbers of light curves (Kipping et al. 2015). For more details on the LCTOOLS package and the visual survey methodology, see Rappaport et al. (2018). EPIC 205718330 and EPIC 235240266 were identified as distinct objects in the *K2* dataset based on their dipper-like profiles but very shallow transit depths.

#### 2.1.1 EPIC 205718330

EPIC 205718330 was observed during *K2* Campaign 2 (K2/C2). The 77.5-d K2/C2 light curve, shown in Fig. 2, was extracted using the *K2* self-field flattening (K2SFF) technique described in Vanderburg & Johnson (2014) and Vanderburg et al. (2016). K2SFF extracts light curves from *Kepler* target pixel files using fixed photometric apertures, correcting for spacecraft motion by correlating observed flux variability with spacecraft pointing. This correction is needed because quasi-periodic thruster firings that account for spacecraft pointing drift can introduce artificial systematics into the *K2* light curves as differing amounts of target flux are lost or contaminated within the fixed photometric aperture.

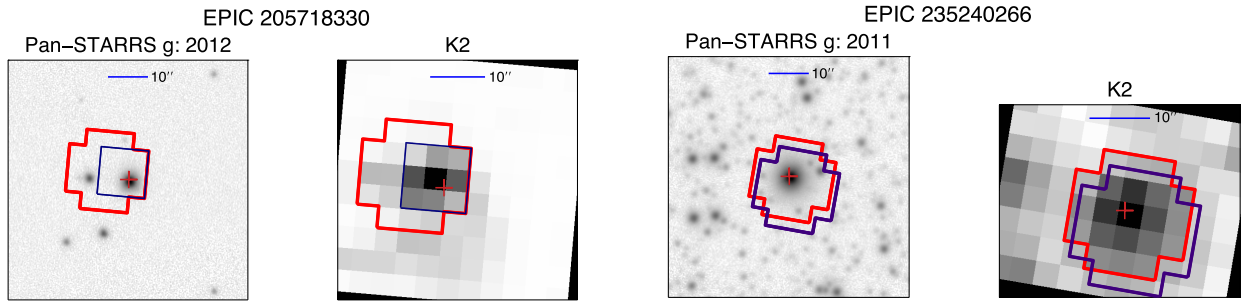
Although the K2SFF light curves are made publicly available via the Mikulski Archive for Space Telescope (MAST),<sup>2</sup> we improved upon the default K2SFF output by performing the systematics correction on the full *K2* light curve, rather than splitting the time series into two segments; this eliminated a jump midway through the default K2SFF light curve. As shown in Fig. 1, we extracted the light curve using a large aperture to improve photometric precision, however one consequence was the inclusion of two contaminating stars; we confirmed that the dipping events were associated with EPIC 205718330 by re-extracting the light curve using a smaller aperture that excluded these other stars, but also some flux from EPIC 205718330. The normalized light curve shown in Fig. 2 has been corrected for dilution due to the two contaminant stars by subtracting their fractional flux; for this, we used the *Gaia* Data Release 2 (DR2; *Gaia* Collaboration et al. 2018) *G*-band magnitudes, which are similar to *Kepler* magnitudes (the dilution correction was ultimately negligible). To normalize the light curve, we divide by a fitted cubic spline with uniform knots every 3 d constructed using the LSQUINVIATESPLINE interpolation in SCIPY. When fitting the spline, we excluded sections of the light curve containing the dips as well as two regions of increased scatter that are likely *not* due to astrophysical phenomenon associated with the target star (these are greyed out in Fig. 2). We then interpolated the fitted spline over the excluded regions and applied the correction to the entire light curve.

#### 2.1.2 EPIC 235240266

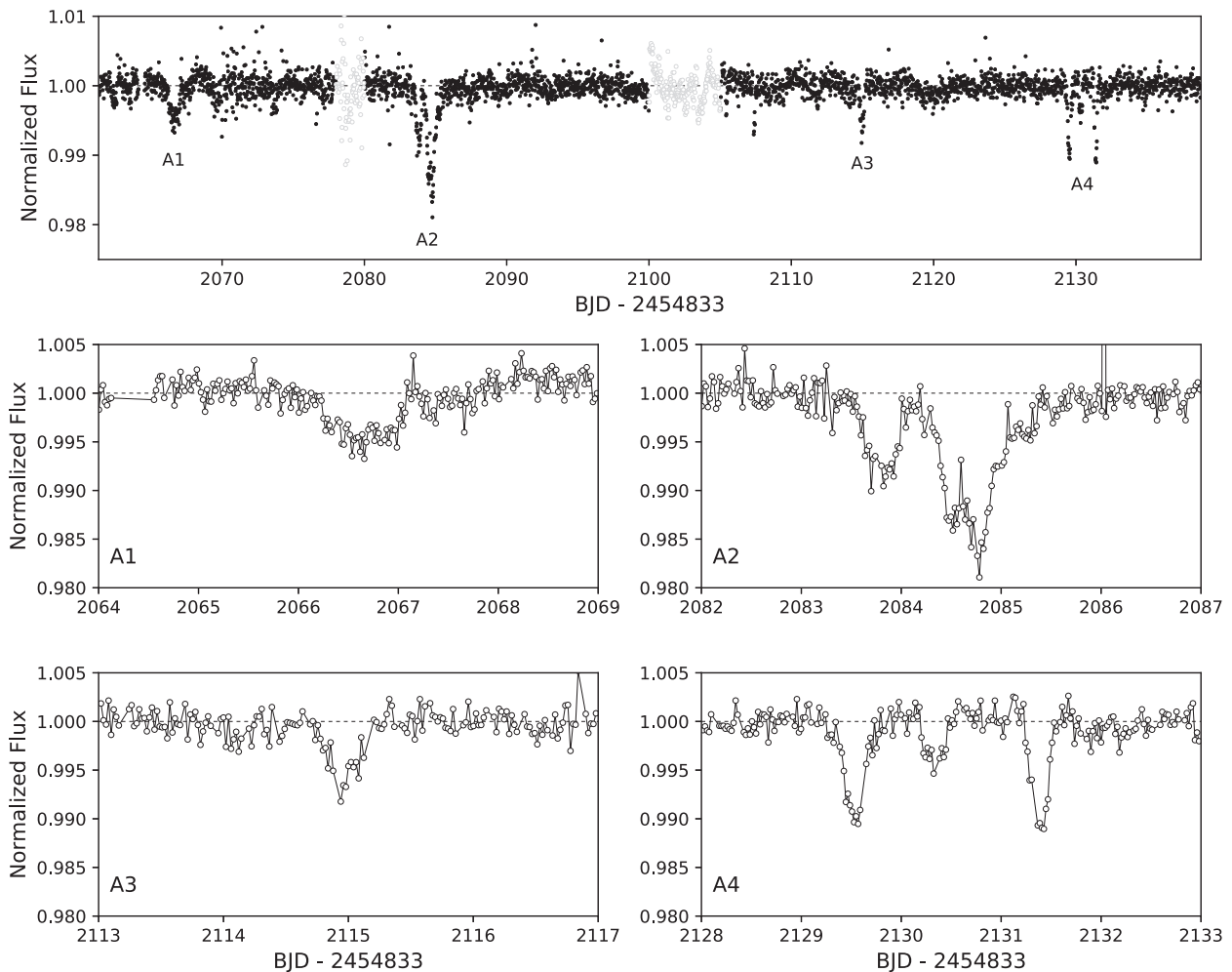
EPIC 235240266 was targeted during *K2* Campaign 11 (K2/C11). K2/C11 was separated into two operational segments due to an error in the initial roll-angle used to minimize solar torque on the spacecraft. An excess roll motion identified at the beginning of

<sup>1</sup><https://sites.google.com/a/lctools.net/lctools/>

<sup>2</sup><https://archive.stsci.edu/prepds/k2sff/>



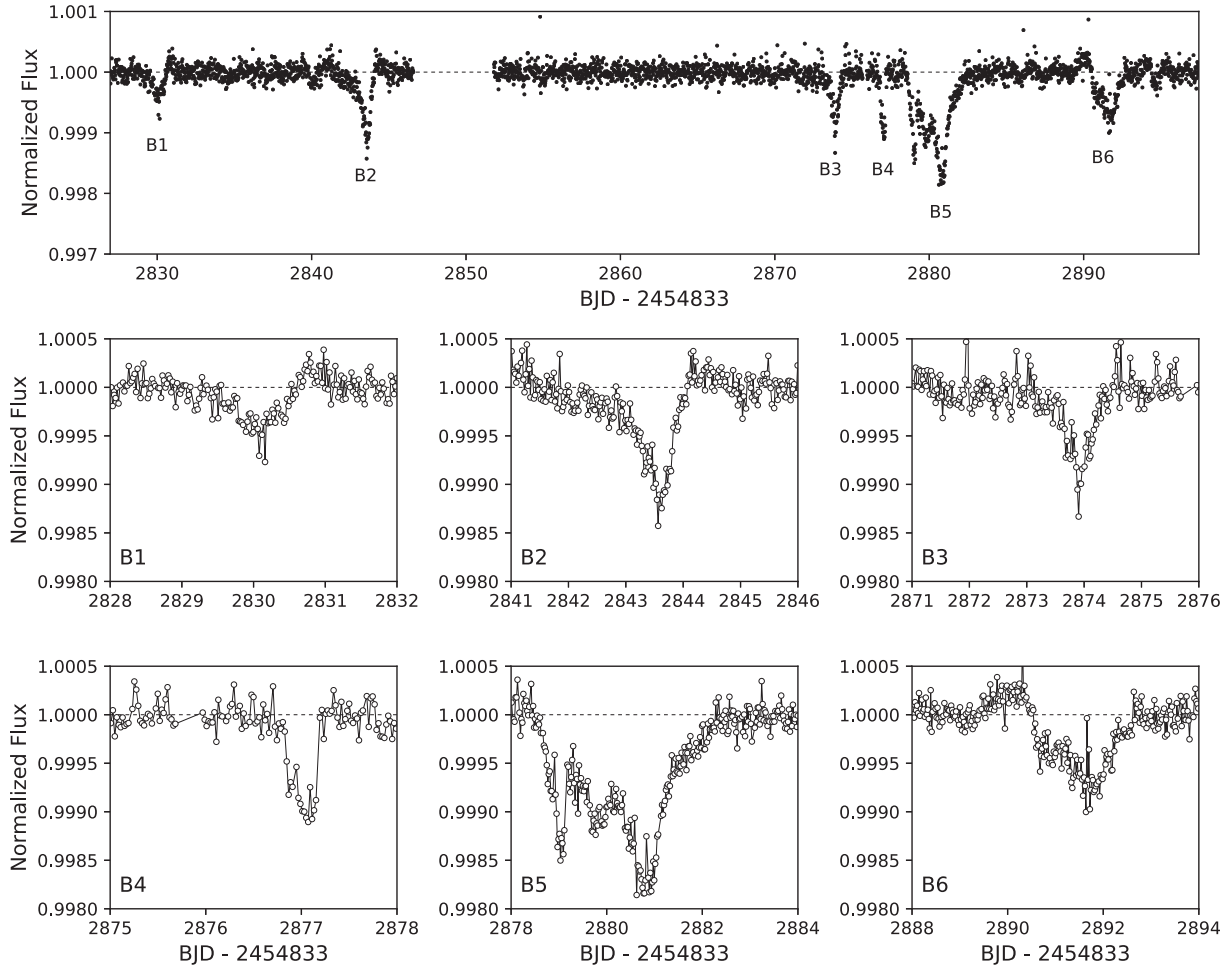
**Figure 1.** Photometric apertures used to extract the light curves shown in Figs 2 and 3, overlaid on Pan-STARRS and K2 images of EPIC 205718330 (left) and EPIC 235240266 (right). For EPIC 205718330, the red aperture was used to produce the light curve shown in Fig. 2, while the blue aperture excludes two nearby stars but still produces a light curve that exhibits the dipping events (see Section 2.1.1). For EPIC 235240266, the blue aperture was used to extract the light curve during the first half of K2/C11, while the red aperture was used to extract the light curve after *Kepler*'s pointing was adjusted (see Section 2.1.2).



**Figure 2.** *Top:* normalized K2/C2 light curve of EPIC 205718330 (Section 2.1.1). *Bottom:* closer looks at the four main dipping events.

K2/C11 indicated that targets would eventually move out of their set apertures. Therefore a  $-0.32^\circ$  roll offset was applied 23 d into K2/C11, requiring new target aperture definitions, shown in Fig. 1. The two light-curve segments are identified separately in the MAST archive as C111 and C112. We downloaded the default K2SFF light curves, however due to the break in operations during K2/C11, there remained a jump in the data between the two segments as

well as upward ‘hooks’ at the beginning of each segment due to thermal settling of the spacecraft. Thus we removed the first 2 d of each segment before normalizing with fitted cubic splines with uniform knots every 1.5 and 1.0 d for the first and second segments, respectively. We note that the dilution corrections for the much fainter contaminant stars in the photometric aperture were negligible. Fig. 3 shows the full 70.5-d K2/C11 light curve.



**Figure 3.** *Top:* normalized K2/C11 light curve of EPIC 235240266 (Section 2.1.2). *Bottom:* closer looks at the six main dipping events.

### 2.1.3 Validation checks of K2 light curves

We conducted validation checks to rule out common false-positive dip signals seen in K2 data. First, we re-ran the K2SFF de-trending using a range of parameters to assess the robustness of the dips. Although the dips can be made slightly shallower or deeper depending on the chosen de-trending parameters, the changes were always less than a factor of two for reasonable values, and no combination of de-trending parameters could completely erase any of the dips. Thus we are confident that the dips are not a bi-product of the K2SFF de-trending process. Secondly, we checked for time-variable background noise (‘rolling bands’) and contamination from nearby ( $\lesssim 5$  arcmin) bright stars that could explain the dips. No time-variable background signals were seen around the targets and no similar dimming events were found in nearby stars on the same CCD module during the dips. Thirdly, we tested for ‘CCD crosstalk’ that occurs when bright stars cause signals at the same pixel coordinates on other channels within the same module due to the coupled CCD readout. For both targets, we inspected all downloaded stars within a given radius on each channel in the module, but found no correlations between the dips and variability in nearby stars. To check against sources not downloaded individually, we inspected the full-frame images (FFIs) for nearby bright stars: only EPIC 235240266 had a nearby saturated star on a different channel, however our target is outside of the halo and away from the bleed column, thus unlikely to be affected by crosstalk. Although EPIC 235240266

could still be on a diffraction spike, there is no evidence of crosstalk on neighbouring individually downloaded stars.

## 2.2 Literature data

Literature data come from all-sky photometric surveys and *Gaia* DR2. Table 1 gives the precise coordinates ( $\alpha_{J2000}$ ,  $\delta_{J2000}$ ), proper motions ( $\mu_\alpha$ ,  $\mu_\delta$ ), and distances ( $d$ ) from *Gaia* DR2. Table 2 gives the available photometry: optical photometry is from the AAVSO Photometric All Sky Survey (APASS; Henden et al. 2016) and *Gaia* DR2; near-infrared photometry is from the Deep Near Infrared Survey of the Southern Sky (DENIS; DENIS Consortium 2005) and Two Micron All-Sky Survey (2MASS; Skrutskie et al. 2006); mid-infrared photometry is from the Wide-field Infrared Survey Explorer (WISE; Wright et al. 2010). The 2MASS designations for EPIC 205718330 and EPIC 235240266 are 2MASS 16333538–1530414 and 2MASS 17241057–2332318, respectively.

## 2.3 Follow-up observations

### 2.3.1 Spectroscopy

We acquired spectra with the wide-band, intermediate-resolution X-Shooter spectrograph (Vernet et al. 2011) mounted on the 8.2 m European Southern Observatory (ESO) Very Large Telescope (VLT) at Cerro Paranal in Chile during UT 2018 May 20–21.

**Table 1.** Stellar properties.

| Parameter             | EPIC 205718330      | EPIC 235240266      | Units                |
|-----------------------|---------------------|---------------------|----------------------|
| <i>Gaia</i>           |                     |                     |                      |
| $\alpha_{J2000}$      | 16:33:35.3702       | 17:24:10.5454       |                      |
| $\delta_{J2000}$      | -15:30:42.420       | -23:32:32.636       |                      |
| $\mu_\alpha$          | -14.867 $\pm$ 0.070 | -21.722 $\pm$ 0.102 | mas yr <sup>-1</sup> |
| $\mu_\delta$          | -55.413 $\pm$ 0.047 | -46.900 $\pm$ 0.081 | mas yr <sup>-1</sup> |
| $d$                   | 240.7 $\pm$ 2.6     | 334.6 $\pm$ 7.5     | pc                   |
| Photometry + parallax |                     |                     |                      |
| $T_{\text{eff}}$      | 4810                | 6120                | K                    |
| $A_V$                 | 1.84                | 1.60                | mag                  |
| $\log g$              | 4.57                | 4.10                |                      |
| [Fe/H]                | 0.13                | 0.04                |                      |
| $R_*$                 | 0.76                | 1.64                | $R_\odot$            |
| $M_*$                 | 0.78                | 1.20                | $M_\odot$            |
| X-Shooter spectra     |                     |                     |                      |
| $T_{\text{eff}}$      | 4850 $\pm$ 200      | 5850 $\pm$ 120      | K                    |
| $\log g$              | 3.7 $\pm$ 0.5       | 3.2 $\pm$ 0.4       |                      |
| $v \sin i$            | <8                  | 11 $\pm$ 2          | km s <sup>-1</sup>   |
| RV                    | -12.8 $\pm$ 2.0     | -28.5 $\pm$ 1.0     | km s <sup>-1</sup>   |
| SNIFS + SpeX spectra  |                     |                     |                      |
| $T_{\text{eff}}$      | 4900                | 5700                | K                    |
| $A_V$                 | 2.1                 | 1.4                 | mag                  |
| $\log g$              | 4.0                 | 3.5                 |                      |
| [Fe/H]                | -0.5                | -0.5                |                      |

**Table 2.** Photometry.

| Band                       | EPIC 205718330     | EPIC 235240266     |
|----------------------------|--------------------|--------------------|
| Johnson <i>B</i>           | 16.767 $\pm$ 0.080 | 13.670 $\pm$ 0.040 |
| Johnson <i>V</i>           | 15.209 $\pm$ 0.048 | 12.648 $\pm$ 0.031 |
| Sloan <i>g'</i>            | 16.056 $\pm$ 0.040 | 13.134 $\pm$ 0.031 |
| Sloan <i>r'</i>            | 14.553 $\pm$ 0.030 | 12.303 $\pm$ 0.040 |
| Sloan <i>i'</i>            | 14.144 $\pm$ 0.360 | 11.908 $\pm$ 0.060 |
| <i>G</i> <sub>BP</sub>     | 15.501 $\pm$ 0.001 | 12.919 $\pm$ 0.002 |
| <i>G</i> <sub>G</sub>      | 14.523 $\pm$ 0.002 | 12.298 $\pm$ 0.001 |
| <i>G</i> <sub>RP</sub>     | 13.549 $\pm$ 0.001 | 11.554 $\pm$ 0.002 |
| 2MASS <i>J</i>             | 12.095 $\pm$ 0.027 | 10.494 $\pm$ 0.022 |
| 2MASS <i>H</i>             | 11.389 $\pm$ 0.024 | 10.039 $\pm$ 0.022 |
| 2MASS <i>K<sub>S</sub></i> | 11.177 $\pm$ 0.019 | 9.911 $\pm$ 0.023  |
| WISE 1                     | 11.054 $\pm$ 0.024 | 9.831 $\pm$ 0.023  |
| WISE 2                     | 11.099 $\pm$ 0.028 | 9.898 $\pm$ 0.021  |
| WISE 3                     | 10.984 $\pm$ 0.045 | 9.935 $\pm$ 0.099  |
| WISE 4                     | >8.331             | >8.458             |

VLT/X-Shooter simultaneously covers wavelengths from about 300 to 2500 nm divided into UVB (300–550 nm), VIS (500–1050 nm), and NIR (1000–2500 nm) arms. The slit widths differ for each arm: we used narrow slits (0.1, 0.4, and 0.4 arcsec) to obtain finer spectral resolution ( $R \simeq 5400$ , 18 400, and 11 600) in addition to wide slits (5.0, 5.0, and 5.0 arcsec) that do not suffer from flux losses for absolute flux calibration. Data reduction was performed with the ESO X-Shooter pipeline (Modigliani et al. 2010) version 2.9.3, which includes flat-fielding, bias subtraction, order extraction and combination, rectification, wavelength calibration, flux calibration using standard stars observed in the same night, and final extraction of the spectrum.

We also obtained optical spectra using the moderate-resolution Super-Nova Integral Field Spectrograph (SNIFS; Aldering et al. 2002; Lantz et al. 2004) at the University of Hawaii 2.2 m telescope

atop Maunakea during UT 2018 May 18–19. SNIFS covers wavelengths from 3200 to 9700 Å and does not suffer from wavelength-dependent slit losses that can be difficult to accurately correct. Our SNIFS spectra have resolutions of  $R \simeq 900$  and signal-to-noise ratios of SNR  $\simeq 100$  per resolution element at 6500 Å. Details of our SNIFS observations, data reduction, and extraction can be found in Mann et al. (2012) and Lépine et al. (2013).

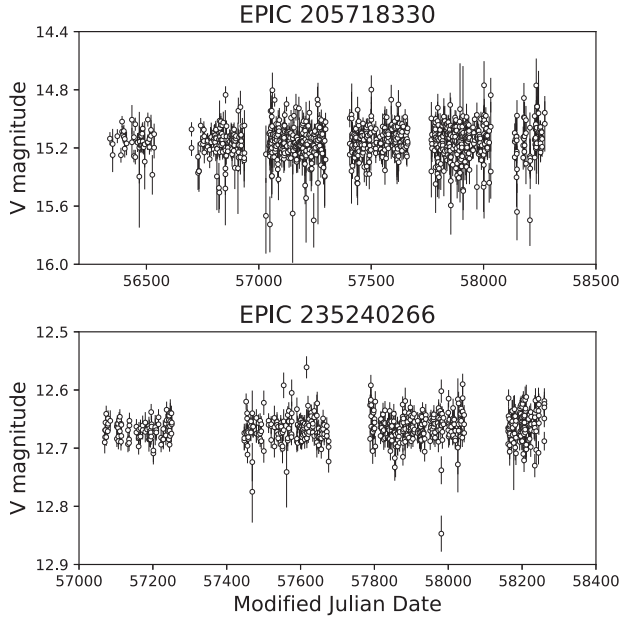
We acquired moderate-resolution near-infrared spectra using the upgraded SpeX spectrograph (Spex; Rayner et al. 2003) on the 3.2 m NASA Infrared Telescope Facility (IRTF) atop Maunakea on UT 2018 April 24. Our SpeX spectra were taken in the short cross-dispersed mode using the 0.3 arcsec  $\times$  15 arcsec slit, covering 0.7–2.5  $\mu\text{m}$  at  $R \approx 2000$  with SNR  $\gtrsim 80$  in *K* band. Basic reduction (bias subtraction, flat-fielding, extraction, etc.) was carried out with SPEXTOOL (Cushing, Vacca & Rayner 2004). Flux calibration and telluric line removal were then performed using A0V standards with XTELLCOR (Vacca, Cushing & Rayner 2003). See Mann, Gaidos & Ansdell (2013) for details on the observations, data reduction, and spectrum extraction.

### 2.3.2 AO Imaging

Adaptive optics (AO) imaging for EPIC 205718330 was acquired using the Infrared Camera and Spectrograph (IRCS; Kobayashi et al. 2000) with AO88 (Hayano et al. 2010) on the Subaru Telescope atop Maunakea on UT 2018 June 14. We performed *K'* imaging in fine-sampling mode using a five-point dither pattern with a total integration of 37.5 s. Weather conditions were good and natural seeing was 0.4–0.6 arcsec in near-infrared bands. We reduced the raw IRCS data using the procedures of Hirano et al. (2016); this included dark subtraction, flat-fielding, and distortion correction of the individual frames, which were then aligned and median combined to form the final image. For EPIC 235240266, we used the Near InfraRed imaging Camera (NIRC2) on the Keck II 10 m telescope atop Maunakea with natural guide star AO (NGS-AO; Wizinowich et al. 2000; van Dam, Le Mignant & Macintosh 2004) on UT 2018 April 29. Seeing conditions were poor and only partial corrections were obtained in most images: the best resolution was 0.6 arcsec. Eight sets of 10  $\times$  0.5 integrations were obtained through the *K'* filter with the narrow camera.

### 2.3.3 Long-baseline light curves

To assess long-term ( $\sim$ yr) variability, we used photometry from the All-Sky Automated Survey for SuperNovae (ASAS-SN; Shappee et al. 2014; Kochanek et al. 2017). ASAS-SN images the sky every 2 d down to  $V \sim 17$  from CTIO in Chile and Haleakala in Hawaii, both hosted by the Las Cumbres Observatory Global Telescope Network (LCOGT; Brown et al. 2013). Each site has four 14 cm lenses, each with a 2k  $\times$  2k CCD camera. The field of view is 4.5 deg  $\times$  4.5 deg, the pixel scale is 8 arcsec, and the FWHM of the PSF is 15 arcsec. The *V*-band magnitudes for each source were extracted from the images using aperture photometry with zero-points calibrated using the APASS catalogue (Levine 2017). EPIC 205718330 was observed  $\simeq 1000$  times from UT 2013 February 14 to 2018 June 3 with a median per-point error of 0.06 mag, while EPIC 235240266 was observed  $\simeq 600$  times from UT 2015 February 16 to 2018 May 22 with a median per-point error of 0.02 mag. The ASAS-SN light curves for both stars are shown in Fig. 4.



**Figure 4.** Long-baseline light curves from ASAS-SN (Section 2.3.3), spanning 5.3 yr for EPIC 205718330 and 3.3 yr for EPIC 235240266. No long-term trends are evident, and the single-point drops in flux typically have uncertainties  $\gtrsim 2 \times$  the median error thus are likely unreliable measurements.

### 3 ANALYSIS

#### 3.1 Stellar properties

##### 3.1.1 Photometrically derived properties

We fit the *Gaia* parallax in Table 1 and the observed photometry in Table 2 (except for the *Gaia* magnitudes) to the MESA Isochrones & Stellar Tracks (Dotter 2016) model grid using the ISOCHRONES PYTHON package (Morton 2015). ISOCHRONES is a tool for inferring model-based physical properties given photometric or spectroscopic observations of a star. The package performs 3D linear interpolations in mass–metallicity–age parameter space across a given stellar model grid and then uses nested sampling to capture the potentially multi-modal posterior distributions of the stellar physical parameters (e.g. in the case of evolved stars along the subgiant branch). For more details on the fitting method and applications to other systems, see Montet et al. (2015) and Morton et al. (2016). The best-fit results are shown in Table 1; typical errors were a few per cent, although these are likely underestimated. Nevertheless, the results indicate that EPIC 205718330 and EPIC 235240266 have stellar effective temperatures ( $T_{\text{eff}}$ ) of  $\approx 5000$  K and  $\approx 6000$  K, corresponding to main-sequence mid-K and late-F dwarfs, respectively. They also both have metallicities ( $[\text{Fe}/\text{H}]$ ) consistent with solar and moderate extinctions ( $A_V$ ), as expected for their locations. We note that EPIC 235240266 has a surface gravity of  $\log g \approx 4.0$ , indicating it may be ascending the sub-giant branch, which is also suggested by its  $K_S$  magnitude and *Gaia* distance.

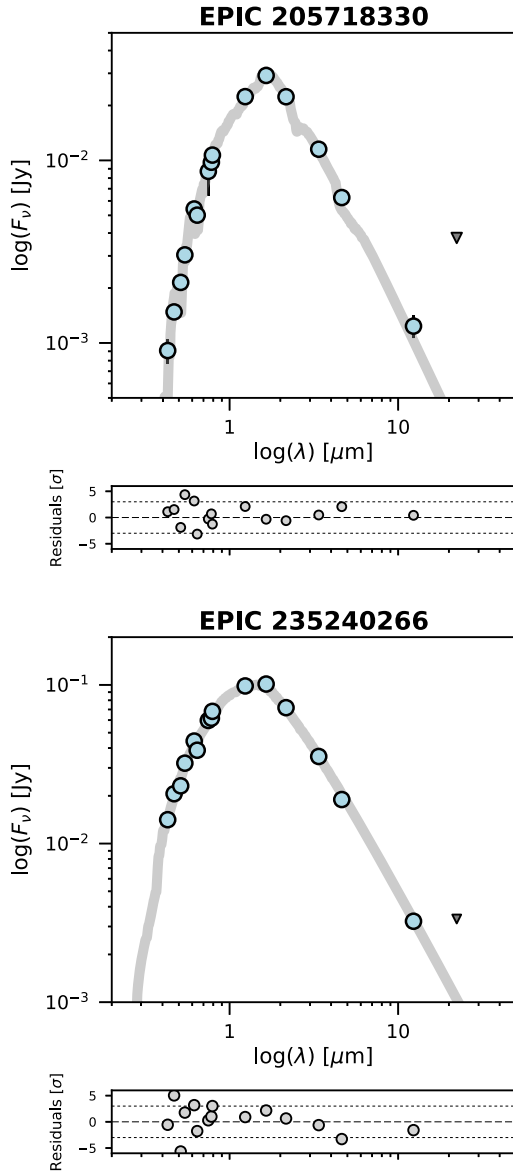
##### 3.1.2 Spectroscopically derived properties

We used our intermediate-resolution X-Shooter spectra (Section 2.3.1) to derive the stellar properties of EPIC 205718330 and EPIC 235240266 given in Table 1. For this, we utilized ROTFIT (Frasca et al. 2017), which fits BT-SETTL synthetic stellar pho-

tosphere templates (Allard, Homeier & Freytag 2011) to several segments of continuum-normalized X-Shooter spectra in order to derive atmospheric parameters ( $T_{\text{eff}}$  and  $\log g$ ) as well as projected rotational velocity ( $v \sin i$ ) by  $\chi^2$  minimization. We assumed solar metallicity and zero veiling (note that because ROTFIT does not fit the continuum shape, assumptions of extinction do not affect the results). For EPIC 205718330 the best-fitting model had  $T_{\text{eff}} = 4850 \pm 200$  K and  $\log g = 3.7 \pm 0.5$ , while for EPIC 235240266 the best-fitting model had  $T_{\text{eff}} = 5850 \pm 120$  K and  $\log g = 3.2 \pm 0.6$  – all roughly consistent with the values derived from photometry and *Gaia* parallax (Section 3.1.1). We also find low  $v \sin i$  values of  $< 8 \text{ km s}^{-1}$  for EPIC 205718330 and  $11 \pm 2 \text{ km s}^{-1}$  for EPIC 235240266 (as shown in Frasca et al. 2017, the resolution and sampling of X-Shooter spectra do not allow constraints on  $v \sin i$  lower than 6 or 8  $\text{km s}^{-1}$ , depending on the slit width). ROTFIT also measures the heliocentric radial velocity (RV) by means of a Gaussian fit to the cross-correlation function between the target and synthetic spectrum, where the heliocentric correction is calculated by the X-Shooter pipeline; we found  $\text{RV} = -12.8 \pm 2.0 \text{ km s}^{-1}$  for EPIC 205718330 and  $\text{RV} = -28.5 \pm 1.0 \text{ km s}^{-1}$  for EPIC 235240266.

Additionally, we used our moderate-resolution visible SNIFS spectra and near-infrared SpeX spectra (Section 2.3.1) to check these stellar properties while varying  $[\text{Fe}/\text{H}]$  and  $A_V$ . We prepared a single flux-calibrated spectrum for each target by splicing their SNIFS and SpeX spectra together, slightly distorting the spectra to achieve minimum  $\chi^2$  agreement between synthetic magnitudes generated from the observed spectra using the profiles determined in Mann & von Braun (2015) and the actual APASS and 2MASS photometry. We then compared these flux-calibrated spectra to a grid of model atmosphere spectra generated by the PHOENIX code (Husser et al. 2013), with steps of 100 K in  $T_{\text{eff}}$ , 0.5 in  $\log g$ , and 0.5 in  $[\text{Fe}/\text{H}]$ . For each comparison model spectrum the best-fitting  $A_V$  was calculated, adopting the Cardelli, Clayton & Mathis (1989) extinction model. These stellar properties are given in Table 1; we do not give uncertainties due to strong degeneracies between  $T_{\text{eff}}$  and  $A_V$ . For EPIC 205718330, the best-fitting model had  $T_{\text{eff}} \approx 4900$  K,  $A_V \approx 2.07$ ,  $\log g \approx 4.0$ , and  $[\text{Fe}/\text{H}] \approx -0.5$  – all roughly consistent with the values derived from the photometry and *Gaia* parallax (Section 3.1.1; unsurprising since the spectra are flux-calibrated with photometry) as well as our X-Shooter spectra (see above). The expected total extinction along this line of sight is  $A_V \approx 2.2$  (Schlegel, Finkbeiner & Davis 1998; Schlafly & Finkbeiner 2011), which could be consistent with our best-fitting value if most of this total extinction is due to the foreground Upper Scorpius cloud. For EPIC 235240266, the best-fitting model had  $T_{\text{eff}} \approx 5700$  K,  $A_V \approx 1.4$ ,  $\log g \approx 3.5$ , and  $[\text{Fe}/\text{H}] \approx -0.5$ ; this is again broadly consistent with the photometry and *Gaia* parallax as well as our X-Shooter spectra, and is allowed by the expected total extinction along this line of sight of  $A_V \approx 3.2$ .

Stellar properties based on photometry and the overall spectral energy distribution (SED) shape are subject to systematic errors produced by interstellar reddening, if  $A_V$  is not independently determined, and to a lesser extent by the covariance between  $T_{\text{eff}}$ ,  $\log g$ , and  $[\text{Fe}/\text{H}]$ . This is particularly problematic for EPIC 235240266, as its photometry and parallax are consistent either with an F-type dwarf that is more reddened, or a K-type subgiant that is less reddened. These degeneracies have less impact on analyses based on spectra that resolve individual lines. In particular, the narrowness of strong lines in the X-Shooter spectrum of EPIC 235240266 suggests lower  $\log g$ , but final adjudication will probably require a higher quality spectrum than what is currently available.

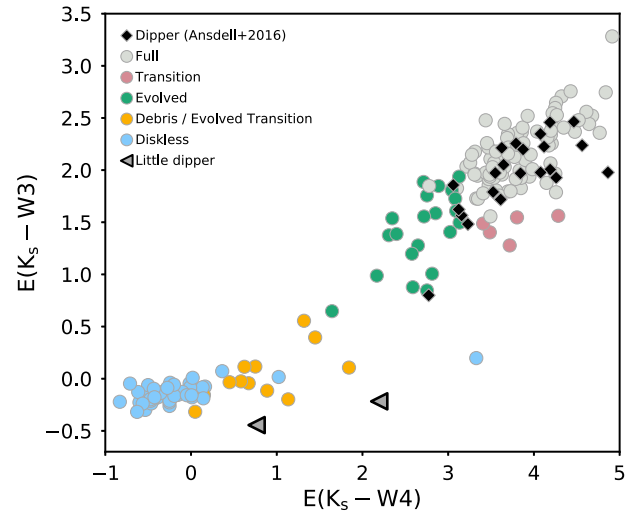


**Figure 5.** SEDs of EPIC 205718330 (top) and EPIC 235240266 (bottom) using photometry from Table 2. Blue circles are detections, grey triangles are upper limits, and error bars are typically smaller than the symbols. Thick grey lines are best-fitting PHOENIX stellar photosphere models (Section 3.2.1). Sub-panels show residuals of the observed and synthetic photometry in units of measurement uncertainty ( $\sigma$ ); dotted horizontal lines denote  $\pm 3\sigma$  limits. The SEDs illustrate the lack of significant infrared excess above the stellar photosphere for both targets.

## 3.2 Signatures of youth

### 3.2.1 Infrared excess

We used the observed photometry in Table 2 to construct SEDs, which we compared to synthetic photometry derived from PHOENIX stellar atmosphere models to constrain the levels of any infrared excess above the stellar photosphere that could be indicative of dusty circumstellar discs. We found the best-fitting stellar model by minimizing the differences between the observed and synthetic photometry while varying  $T_{\text{eff}}$ ,  $A_V$ ,  $\log g$ , and  $[M/H]$ . The SEDs and best-fitting models are shown in Fig. 5, which illustrate a lack of detectable infrared excess for both targets. The corresponding limits



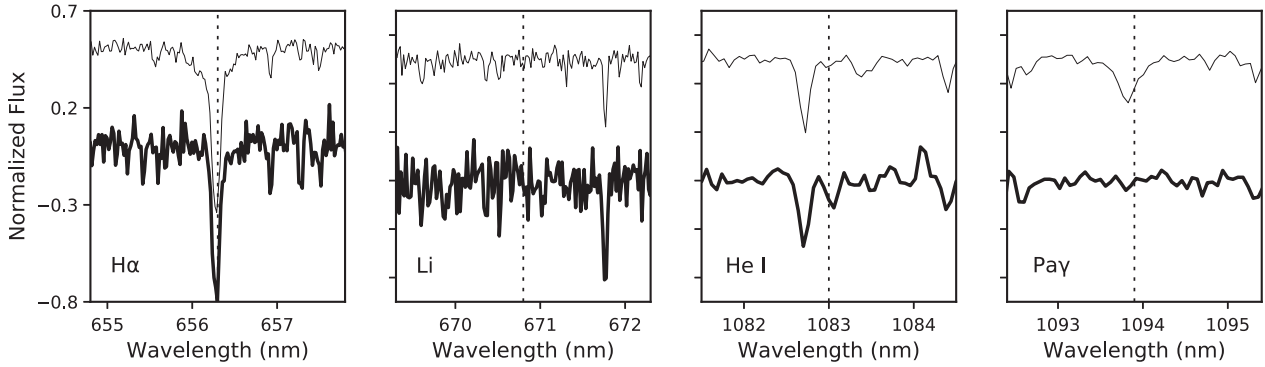
**Figure 6.** Extinction-corrected WISE infrared colour excesses used to classify disc types. Circles indicate late-type (K/M dwarf) Upper Sco members and colours specify their disc types; see Luhman & Mamajek (2012) for details on the extinction corrections and disc classifications. The black diamonds are known dipper stars from Ansdell et al. (2016b) and the little dippers from this work are shown by the grey triangles, indicating upper limits on the WISE-4 excesses. The little dippers are clearly distinct from primordial discs and thus the dipper population, however we cannot rule out debris discs based on current limits (Section 3.2.1).

on the fractional luminosity  $f = L_{\text{disc}}/L_{\star}$  for discs approximated as blackbodies with temperatures of 300 K are  $f < 2 \times 10^{-3}$  and  $f < 3 \times 10^{-4}$  for EPIC 205718330 and EPIC 235240266, respectively (limits at all other temperatures are higher). These modest limits are insufficient to rule out possible debris discs, which commonly have  $f < 1 \times 10^{-4}$ , especially at ages older than  $\sim 100$  Myr (Wyatt 2008). However, we can use these limits on infrared excess to clearly rule out primordial circumstellar discs, which sets these systems apart from the young dipper stars, as illustrated in Fig. 6. Additionally, the long-baseline light curves from ASAS-SN (Fig. 4; Section 2.3.3) do not exhibit any long-term dimming that could indicate the presence of circumstellar material in the outer disc (e.g. Rodriguez et al. 2017).

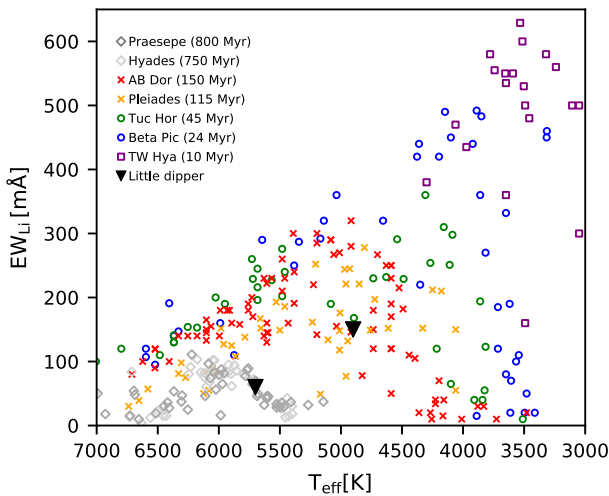
### 3.2.2 Spectroscopic accretion signatures

Young objects hosting circumstellar discs exhibit spectral accretion signatures that are produced by shocked gas free-falling onto the star along magnetic field lines as well as disc winds that can be emitted via a variety of mechanisms. We therefore searched our X-Shooter spectra for optical and near-infrared magnetospheric accretion signatures, namely  $H\alpha$  (6563 Å),  $\text{Pa } \gamma$  (1.094  $\mu\text{m}$ ),  $\text{Pa } \beta$  (1.280  $\mu\text{m}$ ), and  $\text{Br } \gamma$  (2.166  $\mu\text{m}$ ) emission from H I. These emission lines are routinely observed with X-Shooter in accreting young stars (e.g. Alcalá et al. 2014, 2017). We also searched for the He I (1.083  $\mu\text{m}$ ) line, which is particularly sensitive to inner disc flows; the line can exhibit red-shifted absorption due to in-falling gas and/or blue-shifted absorption due to inner disc winds, which can be shifted on the order of hundreds of  $\text{km s}^{-1}$  (e.g. Edwards et al. 2006).

As shown in Fig. 7, neither EPIC 205718330 nor EPIC 235240266 shows red- or blue-shifted He I absorption and neither source shows  $H\alpha$ ,  $\text{Pa } \gamma$ ,  $\text{Pa } \beta$ , or  $\text{Br } \gamma$  emission. Rather, all lines are seen in absorption at the expected line position or simply not detected. This behaviour is notably different than what is seen



**Figure 7.** Spectral lines used to assess stellar youth (Section 3.2.2). Bold lines correspond to EPIC 205718330, while thin lines offset upwards for clarity correspond to EPIC 235240266. Neither source shows detectable spectral signatures of stellar youth.



**Figure 8.** Lithium equivalent widths ( $EW_{\text{Li}}$ ) as a function of stellar effective temperature ( $T_{\text{eff}}$ ) for young Myr clusters of various ages, compared to our  $3\sigma$   $EW_{\text{Li}}$  upper limits for the little dippers, illustrating that they are both likely  $\gtrsim 150$  Myr old.

for the young dipper stars, which often show these spectroscopic signatures of youth (Ansdell et al. 2016b), albeit more weakly than strongly accreting classical T Tauri stars (e.g. Edwards et al. 2006).

### 3.2.3 Lithium absorption

Another spectroscopic indicator of youth for low-mass stars is Li I (6708.0 Å) absorption. This is because low-mass stars have convective outer envelopes, which transport Li I in their photospheres down into their hotter stellar cores where the element is destroyed. This process is rapid ( $\lesssim 50$  Myr) for mid-to-late M dwarfs with fully convective envelopes, but is slower for early-M and K dwarfs, as illustrated in Fig. 8.

X-Shooter is routinely used to detect Li I absorption in young stars (e.g. Manara et al. 2017). As shown in Fig. 7, our X-Shooter spectra show no signs of significant Li I absorption for either target: we find equivalent widths of  $EW_{\text{Li}} = -0.07 \pm 0.05$  for EPIC 205718330 and  $EW_{\text{Li}} = 0.00 \pm 0.02$  Å for EPIC 235240266. Uncertainties were determined using a Monte Carlo method: we used the standard deviation of the continuum regions around the expected line position to add Gaussian-distributed noise to the observed spectrum, then repeated the  $EW_{\text{Li}}$  measurement 100 times, taking the mean

and standard deviation as our final  $EW_{\text{Li}}$  values and uncertainties, respectively.

The lack of Li absorption allows us to place lower limits on stellar ages. Fig. 8 compares our  $3\sigma$  upper limits on  $EW_{\text{Li}}$  for both stars to the  $EW_{\text{Li}}$  values for members of young clusters of various ages as a function of  $T_{\text{eff}}$ . The  $EW_{\text{Li}}$  values come from: Cummings et al. (2017) for the Hyades and Praesepe; Bouvier et al. (2018) for the Pleiades; and da Silva et al. (2009) for all other regions. The rough ages given in Fig. 8 are taken from Gagné et al. (2018). From Fig. 8, we can constrain the age of EPIC 235240266 to  $\gtrsim 800$  Myr. Due to the larger uncertainties for EPIC 205718330, we can only constrain its age to  $\gtrsim 150$  Myr. Note that these limits assume solar metallicity; for metal-poor stars, the limits on age could be older.

### 3.2.4 Kinematics

The strong constraints on parallax and proper motion from *Gaia* DR2 (Section 2.2; Table 1), combined with the RVs from our X-Shooter spectra (Section 3.1.2), can be used to determine whether EPIC 205718330 or EPIC 235240266 are associated with any young stellar populations that are still sufficiently bound to occupy distinct regions in both physical and kinematic space. In particular, young disc stars are known to cluster in a distinct ‘box’ of galactic space motion ( $UVW$ ; calculated with respect to the Sun, where  $U$  is positive towards the Galactic centre) defined by  $-20 \text{ km s}^{-1} < U < 50 \text{ km s}^{-1}$ ,  $-30 \text{ km s}^{-1} < V < 0 \text{ km s}^{-1}$ , and  $-25 \text{ km s}^{-1} < W < 10 \text{ km s}^{-1}$  (Leggett 1992).

For EPIC 205718330, we calculated Galactic space motions of  $U = -0.36$ ,  $V = -60.28$ , and  $W = -28.21 \text{ km s}^{-1}$ . These values put it outside of the young disc parameter range due to the  $V$  and  $W$  space motion components. Indeed, although its proper motion of  $\mu_{\alpha} = -15 \text{ mas yr}^{-1}$  and  $\mu_{\delta} = -55 \text{ mas yr}^{-1}$  is consistent with the spectroscopically confirmed cool members of the  $\sim 10$  Myr old Upper Sco association (e.g. see fig. 3 in Bouy & Martín 2009), its distance of 240 pc puts it well beyond that of the region (145 pc; de Zeeuw et al. 1999). Moreover, its RV of  $-12 \text{ km s}^{-1}$  is below the typical values for Upper Sco members, which have a median value and  $1\sigma$  velocity dispersion of  $-6.31 \pm 4.61 \text{ km s}^{-1}$  for F2–K9 stars and  $-6.28 \pm 3.04 \text{ km s}^{-1}$  for M0–M8 stars (Dahm, Slesnick & White 2012). For EPIC 235240266, we calculated Galactic space motions of  $U = -24.48$ ,  $V = -81.90$ , and  $W = -15.97 \text{ km s}^{-1}$ . This again puts it outside of the young disc parameter range due to its  $U$  and  $V$  space motion components.



### 3.3 Nearby sources or companions

Our AO imaging of EPIC 205718330 (Section 2.3.2) did not show any nearby bright companions within 5 arcsec. Our detection thresholds have contrast ratios of  $\Delta K' \approx 7$  mag at separations of  $\rho \approx 1$  arcsec or  $\Delta K' \approx 5\text{--}6$  mag at  $\rho \approx 0.5$  arcsec. The latter corresponds to spectral types of M8.0, assuming the stellar parameters in Table 1 and using table 5 in Pecaut & Mamajek (2013), thus we can rule out any companions down through late-M types outside of 0.5 arcsec.

Our AO imaging of EPIC 235240266 (Section 2.3.2) revealed a second source with  $\Delta K' \approx 6.0$  mag at  $\rho \approx 6.1$  arcsec with a position angle of roughly 300 deg. Based on statistical source counts and past experience (Gaidos et al. 2016) this is very likely a background star; moreover, the *Gaia* proper motion for this source is much smaller ( $\mu_\alpha = -1$  mas yr<sup>-1</sup>,  $\mu_\delta = -4$  mas yr<sup>-1</sup>) than that of EPIC 235240266, and the *Gaia* parallax puts the source at  $\sim 2$  kpc. There is no other indication of stellar multiplicity down to separations of  $\rho \approx 0.1$  arcsec with contrasts of  $\Delta K' \approx 6$  mag, which corresponds to spectral types of M6.0, again assuming the stellar parameters in Table 1 and using table 5 in Pecaut & Mamajek (2013). Thus we can rule out companions down through mid-M types outside of 0.1 arcsec.

### 3.4 Dip properties

#### 3.4.1 EPIC 205718330

Fig. 2 shows the four major dimming events (A1–A4) observed during K2/C2 for EPIC 205718330. A1 and A3 are single dipping events, while A2 and A4 appear to be clusters of multiple dips. The dips are generally symmetric in shape given the low signal-to-noise ratio of the data due to the faintness of the star (although one of the dips in A2 is asymmetric, it may be a blend of at least two dips). The individual dip durations are typically  $\tau \simeq 0.5\text{--}1.0$  d and span depths of  $\delta \simeq 0.5\text{--}1.5$  per cent. The gradients of the dips range from  $\simeq 0.01$  to  $\simeq 0.07$  d<sup>-1</sup>, or just a few per cent of the stellar flux per day.

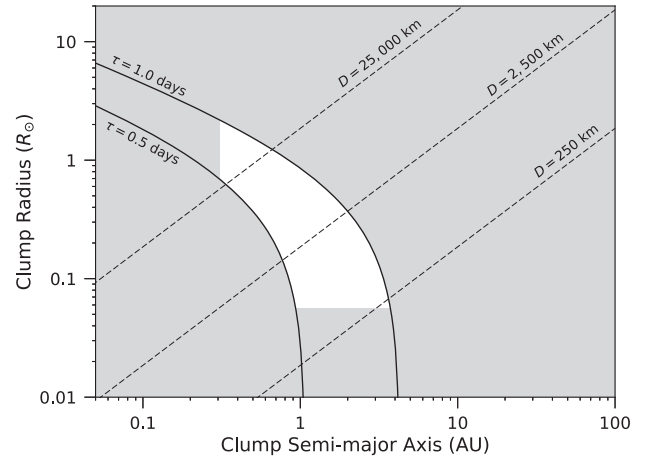
#### 3.4.2 EPIC 235240266

Fig. 3 shows the six major dimming events (B1–B6) observed in the K2/C11 light curve of EPIC 235240266. Similar to EPIC 205718330, the individual dip durations last  $\tau \simeq 0.5\text{--}1.0$  d. However, the depths are much shallower at  $\delta \simeq 0.1$  per cent, resulting in much smaller gradients that range from  $\simeq 0.0006$  to  $\simeq 0.004$  d<sup>-1</sup>. The structures of the dips in the light curve of EPIC 235240266 are also more complicated than those of EPIC 205718330. In particular, some of the dips (B1, B2, B6) are accompanied by potential pre- or post-brightening events; this is likely *not* an artefact of the flattening process, as we can reproduce the brightening events using different normalization techniques (e.g. fitted splines, running medians). Moreover, rather than being symmetric, the dips are asymmetric – specifically, the egresses are significantly steeper (by factors of  $\simeq 1.5\text{--}2.5$ ) than the ingresses for all but the last dipping event.

## 4 DISCUSSION

### 4.1 Ruling out planets

The dip shapes seen in Figs 2 and 3 are clearly different from those seen for planetary transits, which have a distinct flat-bottomed shape. Additionally, the dip properties described in Section 3.4 can be used to rule out planet transits. For EPIC 205718330, the



**Figure 9.** Relation between clump radius ( $R_c$ ) and semimajor axis ( $a$ ) for objects orbiting EPIC 205718330 (Section 4.2) using equation (1). Solid black lines show constant dip durations ( $\tau$ ), assuming a host star of  $M_\star = 0.8 M_\odot$  and  $R_\star = 0.8 R_\odot$ . Dashed black lines show Hill spheres of objects with different diameters ( $D$ ). Grey regions show forbidden values of  $a$  and  $R_c$  based on constraints from the aperiodicity of the events, minimum dip depths of  $\delta_{\min} \simeq 0.5$  per cent, and dip durations of  $\tau \simeq 0.5\text{--}1.0$  d.

transit depths are  $\delta \simeq 0.5\text{--}1.5$  per cent, which correspond to planet radii of  $R_p \simeq 4\text{--}7 R_\oplus$  when simply assuming  $\delta = (R_p/R_\star)^2$  and neglecting limb darkening. However, the transit durations are  $\tau \simeq 0.5\text{--}1.0$  d, which would require that such planets have orbital semimajor axes of  $a \gtrsim 1000$  au – assuming that the transit duration goes as  $\tau = (P/\pi) \arcsin(\sqrt{(R_\star + R_p)^2 + b^2}/a)$ , where  $P$  is the orbital period and  $b$  is the impact parameter. Similar arguments can be applied to rule out planetary transits for EPIC 235240266, which had much smaller dip depths ( $\sim 0.1$  per cent) corresponding to planet radii of  $R_p \sim 2 R_\oplus$ , but similarly long transit durations of  $\tau \simeq 0.5\text{--}1.0$  d.

### 4.2 Gravitationally bound planetesimal clouds?

The dimming events associated with the little dippers could instead be due to occultations of the star by clumps of dusty circumstellar material. This mechanism has been invoked to explain some of the much deeper dimming events associated with the aperiodic young dipper stars that are not significantly accreting and host evolved primordial discs (Ansdell et al. 2016b). Indeed, optically thin debris discs containing such objects would go undetected by the currently available observations of these sources (Section 3.2.1).

To put constraints on the possible sizes and orbital distances of such objects, we followed Ansdell et al. (2016b) and Boyajian et al. (2016) to consider clumps of circumstellar material much less massive than their host star and on circular orbits:

$$R_c \approx 1.85 \tau \left( \frac{M_\star}{a} \right)^{1/2} - R_\star, \quad (1)$$

where  $a$  is the semimajor axis of the clump orbit in au,  $R_c$  is the clump radius in solar radii,  $\tau$  is the dip duration in days, and  $M_\star$  and  $R_\star$  are the stellar mass and radius, respectively, in solar units. The correlation between  $R_c$  and  $a$  from equation (1) is illustrated in Fig. 9 for a star of  $M_\star = 0.8 M_\odot$  and  $R_\star = 0.8 R_\odot$  with dip durations of  $\tau = 0.5$  and  $1.0$  d, comparable to EPIC 205718330.

We can place lower limits on  $a$  due to the aperiodicity of the dimming events, which implies that the clumps have orbital periods longer than the  $\simeq 80$ -d K2 observing campaigns; inputting this limit

into Kepler’s third law gives  $a > 0.34$  au. We can also place lower limits on  $R_c$  from the minimum observed dip depth ( $\delta_{\min}$ ) since the smallest corresponding  $R_c$  would be set by an optically thick clump (e.g. see eq. 5 in Ansdell et al. 2016b); using  $\delta_{\min} = 0.5$  per cent (e.g. for EPIC 205718330) implies that  $R_c > 0.06 R_{\odot}$ . These limits are shown by the grey regions in Fig. 9.

The clumps must be gravitationally bound to be stable against orbital shear (e.g. Kenyon & Bromley 2005) and internal velocity dispersion (e.g. Jackson & Wyatt 2012). Thus we assume they are gravitationally bound within the Hill spheres of planetesimals or planet-sized objects, where the Hill sphere is defined as  $R_{\text{Hill}} = \xi a^3 \sqrt{M_p / (3M_*)}$  and  $\xi$  is the fraction out to which orbits are stable. Fig. 9 shows the Hill spheres of objects of various diameters, assuming bulk densities of  $3 \text{ g cm}^{-3}$  and using  $\xi = 0.5$  (i.e. an average between retrograde and prograde orbits; Rieder & Kenworthy 2016). Given these constraints, the Hill spheres of objects with diameters  $D \sim 250\text{--}25\,000$  km (i.e. spanning large asteroid to super-Earth sizes) can produce the observed dips.

One limiting factor is the required number of such objects that would need to be orbiting at a given semi-major axis for us to observe 4–6 unique transits during the  $\simeq 80$ -d *K2* campaigns. As in Ansdell et al. (2016b), we can estimate the total number of clumps that would pass through our line of sight, assuming they are evenly distributed along the orbit, and correcting for the fact that the line of sight only intercepts  $R_*/H$  of the disc for edge-on inclinations, where  $H$  is the scale height of the disc and assuming  $H/a \sim 0.06$  (the median for debris discs; Hughes, Duchene & Matthews 2018). This gives the total number of clumps in the disc as

$$N_{\text{tot}} \approx 60 N_{\text{obs}} \frac{a^{5/2}}{M_*^{1/2} R_*}, \quad (2)$$

where  $a$  is in au, and  $M_*$  and  $R_*$  are in solar units. This equation predicts a few hundred objects at  $\sim 1$  au, again assuming a host star of  $M_* = 0.8 M_{\odot}$  and  $R_* = 0.8 R_{\odot}$ . Given the constraints shown in Fig. 9, these objects may have a range of diameters. Predictions for smaller orbital radii give smaller required numbers, but correspond to much larger objects. Even the smallest objects would be comparable to some of the largest asteroids in our Solar system, though the survival of such planetesimal discs could be stable over Gyr time-scales (e.g. Heng & Tremaine 2010). Note that this number of required objects no longer holds if the observed objects are clustered in one part of the orbit, and future monitoring of these systems will test this assumption.

The modest WISE limits on infrared excess also do not clearly rule out the possibility of such a population of objects existing. For EPIC 205718330,  $\sim 1$  per cent of the starlight is blocked by orbiting clumps  $\sim 5$  per cent of the time (see Fig. 2), giving an average dimming of  $\sim 0.05$  per cent. This average dimming corresponds to the expected dust fractional luminosity  $f$  for a spherical cloud of clumps surrounding a star, or for a family of clumps along an orbit when corrected by the factor  $\sim R_*/a$  (Wyatt et al. 2018). The WISE limits predict  $f \approx 0.2$  per cent for EPIC 205718330 (Section 3.2.1), thus are clearly insufficient to rule out even a spherical cloud of clumps. For EPIC 235240266, the dips appear to block  $\sim 0.1$  per cent of the starlight  $\sim 10$  per cent of the time (see Fig. 3), implying an average dimming of  $\sim 0.01$  per cent, which is still below but more comparable to the WISE limits of  $f \approx 0.03$  per cent. Thus for EPIC 235240266 the WISE limits cannot rule out a family of clumps along an orbit and perhaps also a spherical cloud of clumps around the star.

### 4.3 Star-grazing exocomets?

Alternatively, the dipping events seen in the light curves of EPIC 205718330 and EPIC 235240266 could be produced by transits of comets, or fragments of a comet, undergoing very close approaches to the star. Thousands of ‘Sun-grazing’ and ‘Sun-skirting’ comets in our own Solar System have been detected by the Solar and Heliospheric Observatory (*SOHO*) Large Angle Spectrometric Coronagraph (LASCO; Brueckner et al. 1995), and many appear to belong to discrete comet families (Jones et al. 2018).

Rappaport et al. (2018) identified several dips in the *Kepler* light curve of a main-sequence F2V-type star and explained them by occulting exocomets. These dips have distinctive asymmetric ‘talon’ shapes that represent transits of trailing dust tails (Lecavelier Des Etangs et al. 1999) as well as, in one case, a pre-transit brightening possibly due to forward scattering by dust in the trailing tail (e.g. DeVore et al. 2016). Comparable transit shapes and brightening events have also been seen in the *Kepler* and *K2* light curves of the ‘disintegrating planets’ (see review in van Lieshout & Rappaport 2017), which have exhibited evidence for both leading and trailing dust tails (e.g. Sanchis-Ojeda et al. 2015).

Similar shapes and effects are seen in the light curves of the little dippers. Not only are the dips of similar duration ( $\sim 1$  d) and depth ( $\sim 0.1$  per cent), but also the egresses of EPIC 235240266’s dips are significantly steeper than the ingresses (Section 3.4.2), suggestive of leading dust tails. Moreover, there is at least one potential pre-transit brightening event (B6 of EPIC 235240266), indicative of forward scattering by dust. The lack of these features in the light curve of EPIC 205718330 does not rule out the exocomet scenario, as such distinctive shapes are not necessarily observed for some cases of orbit, star, and dust properties (Lecavelier Des Etangs 1999).

Consider a single cometary body of radius  $R_c$  on a near-parabolic orbit with periastron distance  $q$  around a star with mass  $M_*$ . At time  $t$  relative to the epoch of periastron, the body will have a true anomaly  $\nu$  such that

$$t = \sqrt{\frac{2q^3}{GM_*}} \left( \tan \frac{\nu}{2} + \frac{1}{3} \tan^3 \frac{\nu}{2} \right). \quad (3)$$

From equation (3), the rate of change of true anomaly is

$$\dot{\nu} = \sqrt{\frac{2GM_*}{q^3}} \cos^4 \frac{\nu}{2}, \quad (4)$$

and thus the rate of change of distance from the star  $a = 2q/(\cos \nu + 1)$  when using equation (4) is

$$\dot{a} = \frac{a^2}{2q} \sqrt{\frac{2GM_*}{q^3}} \cos^4 \frac{\nu}{2} \sin \nu. \quad (5)$$

Assuming mass-loss from the comet is driven by evaporation of a dark, ice-rich surface with a specific latent heat of vaporization  $C$  and containing a fraction  $f_d$  of spherical dust grains of radius  $s$  and density  $\rho_d$ , the cross-sectional surface area of dust ( $A$ ) produced per unit time is

$$\dot{A} = \frac{3L_* R_c^2 f_d}{16C \rho_d s a^2}. \quad (6)$$

Re-expressing equation (6) as the surface area ejected per unit distance from the star, and using equation (5), we have

$$\frac{dA}{dR} = \frac{3L_* R_c^2 f_d q}{16C \rho_d s} \sqrt{\frac{2q^3}{GM_*}} \frac{1}{a^4 \sin(\nu) \cos^4(\nu/2)}. \quad (7)$$

The  $a$  and  $v$  dependencies in equation (7) show that dust production will strongly peak at periastron. Since the probability of a transiting geometry scales as  $1/a$ , these objects are also most likely to significantly obscure the host star near periastron. Moreover, since the flux contributed to the emission in some infrared band-pass will also increase with temperature around periastron, essentially all of the contribution to excess infrared flux is from dust ejected around periastron, assuming the body survives the passage.

We now assume that, during the transit (near periastron), the stellar wind imparts a component to the dust velocity *towards* the observer, and that the transverse velocity remains approximately the Keplerian value. Thus the total cross-sectional area of dust is the production rate (equation 6) multiplied by the transit duration  $\tau = 2R_*/v(q)$ , where  $v(q)$  is the transit velocity at periastron. The maximum dip depth (if the dispersion normal to the orbital plane is small compared to the stellar radius) is therefore

$$\delta^* = \frac{3L_*R_c^2f_d}{16\pi C\rho s q R_*} \sqrt{\frac{2}{GM_*q}}. \quad (8)$$

For a 50–50 water ice–dust composition,  $f_d = 0.5$  and  $C$  is half that of water ice, thus we estimate from equation (8)

$$\delta^* \approx 8 \times 10^{-8} \left(\frac{R_c}{1 \text{ km}}\right)^2 \left(\frac{s}{1 \mu\text{m}}\right)^{-1} \left(\frac{q}{1 \text{ au}}\right)^{-3/2} \times \frac{L_*}{L_\odot} \left(\frac{M_*}{M_\odot}\right)^{-1/2} \left(\frac{R_*}{R_\odot}\right)^{-1}. \quad (9)$$

Hence for a periastron distance of  $q = 0.05$  au (Sun-grazing Kreutz-family comets exhibit a maximum in brightness at this distance; Knight et al. 2010) around a main-sequence K dwarf star with  $M_* = 0.8 M_\odot$ ,  $R_* = 0.8 R_\odot$ , and  $L_* = 0.4 L_\odot$  (i.e. similar to EPIC 205718330), the required comet radius to produce  $\sim 1$  per cent dips with  $\sim 1 \mu\text{m}$  grains is about 50 km. While perhaps common in very young planetary systems, objects of such size would not be expected to be common among older stars. On the other hand, tidally or thermally induced disruption of a 10 km size body into  $\sim 100$  m fragments, analogous to that occurring for Sun-grazing and Sun-skirting comets, would produce the required surface area. The potential clustering of the observed dipping events supports this scenario, although this disruption must happen very near periastron to explain the discrete appearance of the dips. The total mass of dust involved to produce the dips for the above case is in fact what would be expected for a 10-km radius comet.

Likewise, we can approximate the infrared flux as that coming from dust expelled over the time of periastron approach as emission  $B_\lambda$  (e.g. blackbody) with corresponding equilibrium temperature  $T(q)$  at periastron. Since  $a < 2q$  within  $-\pi/2 < \nu < \pi/2$ , we can approximate this close-approach time  $\tau_q$  using equation (3) as

$$\tau_q \approx \frac{8}{3} \sqrt{\frac{2q^3}{GM_*}}. \quad (10)$$

Combining equations (6), (8), and (10) we arrive at

$$F_\lambda = \frac{8\pi}{3} B_\lambda(T(q)) R_* q \delta^*. \quad (11)$$

The infrared excess as a fraction of the stellar photosphere emission is then

$$f_\lambda = \frac{8q B_\lambda(T(q))}{3R_* B_\lambda(T_*)} \delta^*. \quad (12)$$

Even for very hot ( $\sim 1000$  K), large ( $s \gg 1 \mu\text{m}$ ) dust grains that emit efficiently, the expected  $4.6 \mu\text{m}$  excess is  $f \sim 2\delta^* \lesssim 2$  per cent.

This is similar in magnitude to the errors in the WISE photometry (Table 2), and the infrared signature of a *single* such object would have gone undetected. Moreover, the epoch of WISE observations is not the same as *K2* and the time-scale for the dust to be produced and blown away from the star is very short compared to the elapsed time between the two sets of observations.

Additionally, the differences in the depths and durations of the dipping events for EPIC 205718330 and EPIC 235240266 are consistent with objects disintegrating at a common stellar irradiance. The depths of the dips for EPIC 205718330 are  $\sim 1$  per cent while those for EPIC 235240266 are  $\sim 0.1$  per cent; the ratio of these dip depths is consistent with the square of the ratio of their stellar radii, which is at least  $\simeq 5$ . Moreover, the dips for EPIC 235240266 last roughly 1 d while those for EPIC 205718330 are roughly 0.5 d, consistent with the approximation that the difference in duration for a comet disintegrating at a certain irradiance will scale as  $\tau \propto \sqrt{a/M_*}$ , where  $a \propto \sqrt{L_*}$  thus  $\tau \propto L_*^{1/4} M_*^{-1/2}$ . In other words, the dipping events seen in EPIC 205718330 and EPIC 235240266 are consistent with similar objects disintegrating at an irradiance corresponding to distances at which Sun-grazing comets are observed to break up. At least some Sun-grazing and Sun-skirting comets are believed to have evolved onto their close-approaching orbits via a Kozai resonance interaction with the Sun and Jupiter (Jones et al. 2018). Thus it is reasonable to speculate that, if these little dippers are indeed star-grazing exocomets, they indicate the existence of a massive exoplanet that does not transit but might be revealed by long-term radial velocity monitoring.

## 5 CONCLUSION

We presented two systems, EPIC 205718330 and EPIC 235240266, which based on a visual survey of the *K2* dataset appear to represent a class of objects that are rare – either intrinsically or due to the limited sensitivity and time baseline of *K2* observations. The light curves of these stars contain episodic drops in flux with profile shapes and durations similar to those of the young ‘dipper’ stars (i.e. a mixture of symmetric and asymmetric dips lasting  $\simeq 0.5$ –1.0 d), yet with depths  $\sim 1$ –2 orders of magnitude shallower (i.e.  $\simeq 0.1$ –1.0 per cent in flux). We conducted ground-based follow-up of these ‘little dippers’ to derive their stellar parameters and place constraints on the possible mechanisms causing the dimming events.

We first vetted the *K2* data of EPIC 205718330 and EPIC 235240266 for instrumental and/or data processing artefacts that could be causing the dimming events. We tested different parameters for K2SFF de-trending, ruled out contamination from ‘rolling bands’ and nearby bright stars, and checked for evidence of CCD ‘cross-talk.’ Based on these tests, we concluded that the dipping events were both astrophysical and associated with the target sources.

Our follow-up observations and analysis showed that these stars are clearly not young. Their lack of detectable infrared emission in excess of the stellar photosphere precludes protoplanetary discs, though cannot rule out debris discs due to the limited WISE photometric precision. The lack of Li I absorption also puts limits on their age of  $\gtrsim 150$  Myr and  $\gtrsim 800$  Myr for EPIC 205718330 and EPIC 235240266, respectively. Finally, their galactic space motions are inconsistent with the typical *UVW* values for young disc stars, signalling that they are kinematically old. Follow-up spectra indicate that EPIC 205718330 and EPIC 235240266 are likely early-K and late-F type dwarfs, respectively, though EPIC 235240266 could be a K-type subgiant.

Given these constraints, we explored two mechanisms for explaining the dimming events: dust-enshrouded remnants of planet formation and star-grazing exocomets. We argued that these little dipper events are consistent with transits of star-grazing exocomets due to: (1) the shape and depth of the dipping events being consistent with disrupted comet-sized objects transiting while at periastron distances very similar to those of Sun-grazing comets seen in our own Solar System, and (2) the differences in the depths and durations of the dipping events for EPIC 205718330 and EPIC 235240266 being consistent with similar objects disintegrating at a common stellar irradiance. We speculated that this could indicate the existence of massive non-transiting exoplanets driving the close-approach orbits.

One question is why we do not see more of these exocomet-related events in the *Kepler* and *K2* datasets. Rappaport et al. (2018) suggested that the rarity of the exocomets in the *Kepler* dataset could be due to our current photometric precision being only sufficient to detect the largest (and rarest) exocomets with the transit method; smaller exocomet systems, perhaps more typical around the older *Kepler* stars, could still exist but go undetected. However, one might then expect that larger exocomet bodies would be more common in the younger ( $\sim 10$ – $100$  Myr) systems surveyed by *K2*. It is therefore possible that such large exocomets are inherently rare, even in young systems. Another possibility is that, if these really are star-grazing exocomets driven by massive perturbing outer planets, then the low occurrence of gas giants seen in the exoplanet population, combined with the low probability of observing transits of objects on highly eccentric orbits, could explain the rarity of the little dippers. Additional exocomet-like systems could be found by the recently launched Transiting Exoplanet Survey Satellite (Ricker et al. 2015); building up a larger sample and identifying common properties or trends will be important for understanding these objects.

## ACKNOWLEDGEMENTS

MA acknowledges support from the Center for Integrative Planetary Science at the University of California at Berkeley as well as National Science Foundation (NSF) grant NSF AST-1518332 and National Aeronautics and Space Administration (NASA) grants NASA NNX15AC89G and NNX15AD95G/NEXSS. CFM is supported by an ESO Fellowship. GMK is supported by the Royal Society as a Royal Society University Research Fellow. AV's work was performed under contract with the California Institute of Technology/Jet Propulsion Laboratory funded by NASA through the Sagan Fellowship Program executed by the NASA Exoplanet Science Institute. This work is based on observations collected at the European Organisation for Astronomical Research in the Southern Hemisphere under ESO programme 0101.C-0866. This work has made use of data from the European Space Agency (ESA) mission *Gaia* (<https://www.cosmos.esa.int/gaia>), processed by the *Gaia* Data Processing and Analysis Consortium (DPAC, <https://www.cosmos.esa.int/web/gaia/dpac/consortium>). Funding for the DPAC has been provided by national institutions, in particular the institutions participating in the *Gaia* Multilateral Agreement. We made use of the following PYTHON packages: ASTROPY (Astropy Collaboration 2013), a community-developed core PYTHON package for Astronomy, and MATPLOTLIB (Hunter 2007), a plotting package used to construct the figures in this paper. This work benefited from NASA's Nexus for Exoplanet System Science (NExSS) research coordination network sponsored by NASA's Science Mission Directorate. We are grateful to Tae-Soo Pyo and Akihiko Fukui for their support with IRCS observations and data reduction. This work was supported by JSPS KAKENHI Grant Number JP16K17660. TJ

and DL acknowledge developer Allan R. Schmitt for making his light-curve examining software LCTOOLS freely available.

## REFERENCES

- Alcalá J. M. et al., 2014, *A&A*, 561, A2  
 Alcalá J. M. et al., 2017, *A&A*, 600, A20  
 Aldering G. et al., 2002, in Tyson J. A., Wolff S., eds, Proc. SPIE Conf. Ser. Vol. 4836, Survey and Other Telescope Technologies and Discoveries. SPIE, Bellingham, p. 61  
 Alencar S. H. P. et al., 2010, *A&A*, 519, A88  
 Allard F., Homeier D., Freytag B., 2011, in Johns-Krull C., Browning M. K., West A. A., eds, ASP Conf. Ser. Vol. 448, 16th Cambridge Workshop on Cool Stars, Stellar Systems, and the Sun. Astron. Soc. Pac., San Francisco, p. 91  
 Ansdell M., Gaidos E., Williams J. P., Kennedy G., Wyatt M. C., LaCourse D. M., Jacobs T. L., Mann A. W., 2016a, *MNRAS*, 462, L101  
 Ansdell M. et al., 2016b, *ApJ*, 816, 69  
 Astropy Collaboration, 2013, *A&A*, 558, A33  
 Batalha N. M. et al., 2013, *ApJS*, 204, 24  
 Bodman E. H. L. et al., 2017, *MNRAS*, 470, 202  
 Bodman E., Wright J., Boyajian T., Ellis T., 2018, preprint ([arXiv:1806.08842](https://arxiv.org/abs/1806.08842))  
 Borucki W. J., 2016, *Rep. Progr. Phys.*, 79, 036901  
 Bouvier J. et al., 1999, *A&A*, 349, 619  
 Bouvier J. et al., 2018, *A&A*, 613, A63  
 Bouy H., Martín E. L., 2009, *A&A*, 504, 981  
 Boyajian T. S. et al., 2016, *MNRAS*, 457, 3988  
 Brown T. M. et al., 2013, *PASP*, 125, 1031  
 Brueckner G. E. et al., 1995, *Sol. Phys.*, 162, 357  
 Cardelli J. A., Clayton G. C., Mathis J. S., 1989, *ApJ*, 345, 245  
 Cody A. M. et al., 2014, *AJ*, 147, 82  
 Cody A. M., Hillenbrand L. A., 2018, *AJ*, 156, 71  
 Crossfield I. J. M. et al., 2016, *ApJS*, 226, 7  
 Cummings J. D., Deliyannis C. P., Maderak R. M., Steinhauer A., 2017, *AJ*, 153, 128  
 Cushing M. C., Vacca W. D., Rayner J. T., 2004, *PASP*, 116, 362  
 da Silva L., Torres C. A. O., de La Reza R., Quast G. R., Melo C. H. F., Sterzik M. F., 2009, *A&A*, 508, 833  
 Dahm S. E., Slesnick C. L., White R. J., 2012, *ApJ*, 745, 56  
 de Zeeuw P. T., Hoogerwerf R., de Bruijne J. H. J., Brown A. G. A., Blaauw A., 1999, *AJ*, 117, 354  
 DENISdConsortium, 2005, VizieR Online Data Catalog 2263  
 DeVore J., Rappaport S., Sanchis-Ojeda R., Hoffman K., Rowe J., 2016, *MNRAS*, 461, 2453  
 Dotter A., 2016, *ApJS*, 222, 8  
 Edwards S., Fischer W., Hillenbrand L., Kwan J., 2006, *ApJ*, 646, 319  
 Frasca A., Biazzo K., Alcalá J. M., Manara C. F., Stelzer B., Covino E., Antonucci S., 2017, *A&A*, 602, A33  
 Gagné J. et al., 2018, *ApJ*, 856, 23  
 Gaia Collaboration, 2018, *A&A*, 616, A1  
 Gaidos E., Mann A. W., Kraus A. L., Ireland M., 2016, *MNRAS*, 457, 2877  
 Hayano Y. et al., 2010, in Ellerbroek B. L., Marchetti E., Véran J.-P., eds, Proc. SPIE Conf. Ser. Vol. 8447, Adaptive Optics Systems II. SPIE, Bellingham, p. 77360N  
 Hedges C., Hodgkin S., Kennedy G., 2018, *MNRAS*, 476, 2968  
 Henden A. A., Templeton M., Terrell D., Smith T. C., Levine S., Welch D., 2016, VizieR Online Data Catalog 2336  
 Heng K., Tremaine S., 2010, *MNRAS*, 401, 867  
 Hirano T. et al., 2016, *ApJ*, 820, 41  
 Howell S. B. et al., 2014, *PASP*, 126, 398  
 Hughes A. M., Duchêne G., Matthews B. C., 2018, *ARA&A*, 56, 541  
 Hunter J. D., 2007, *Comput. Sci. Eng.*, 9, 90  
 Husser T.-O., Wende-von Berg S., Dreizler S., Homeier D., Reiners A., Barman T., Hauschildt P. H., 2013, *A&A*, 553, A6  
 Jackson A. P., Wyatt M. C., 2012, *MNRAS*, 425, 657  
 Jones G. H. et al., 2018, *Space Sci. Rev.*, 214, 20

- Katz J. I., 2017, *MNRAS*, 471, 3680
- Kenyon S. J., Bromley B. C., 2005, *AJ*, 130, 269
- Kipping D. M., Schmitt A. R., Huang X., Torres G., Nesvorný D., Buchhave L. A., Hartman J., Bakos G. Á., 2015, *ApJ*, 813, 14
- Knight M. M., A'Hearn M. F., Biesecker D. A., Faury G., Hamilton D. P., Lamy P., Llebaria A., 2010, *AJ*, 139, 926
- Kobayashi N. et al., 2000, in Iye M., Moorwood A. F., eds, Proc. SPIE Conf. Ser. Vol. 4008, Optical and IR Telescope Instrumentation and Detectors. SPIE, Bellingham, p. 1056
- Kochanek C. S. et al., 2017, *PASP*, 129, 104502
- Lantz B. et al., 2004, in Mazuray L., Rogers P. J., Wartmann R., eds, Proc. SPIE Conf. Ser. Vol. 5249, Optical Design and Engineering. SPIE, Bellingham, p. 146
- Lecavelier Des Etangs A., 1999, *A&AS*, 140, 15
- Lecavelier Des Etangs A., Vidal-Madjar A., Ferlet R., 1999, *A&A*, 343, 916
- Leggett S. K., 1992, *ApJS*, 82, 351
- Lépine S., Hilton E. J., Mann A. W., Wilde M., Rojas-Ayala B., Cruz K. L., Gaidos E., 2013, *AJ*, 145, 102
- Levine S., 2017, *J. Am. Assoc. Var. Star Obs.*, 45, 127
- Luhman K. L., Mamajek E. E., 2012, *ApJ*, 758, 31
- Manara C. F., Frasca A., Alcalá J. M., Natta A., Stelzer B., Testi L., 2017, *A&A*, 605, A86
- Mann A. W., von Braun K., 2015, *PASP*, 127, 102
- Mann A. W. et al., 2017, *AJ*, 153, 64
- Mann A. W., Gaidos E., Lépine S., Hilton E. J., 2012, *ApJ*, 753, 90
- Mann A. W., Gaidos E., Ansdell M., 2013, *ApJ*, 779, 188
- Modigliani A. et al., 2010, in Silva D. R., Peck A. B., Soifer B. T., eds, Proc. SPIE Conf. Ser. Vol. 7737, Observatory Operations: Strategies, Processes, and Systems III. SPIE, Bellingham, p. 3728
- Montet B. T. et al., 2015, *ApJ*, 809, 25
- Morales-Calderón M. et al., 2011, *ApJ*, 733, 50
- Morton T. D., 2015, *Astrophysics Source Code Library*, record ascl:1503.010
- Morton T. D., Bryson S. T., Coughlin J. L., Rowe J. F., Ravichandran G., Petigura E. A., Haas M. R., Batalha N. M., 2016, *ApJ*, 822, 86
- Pecaut M. J., Mamajek E. E., 2013, *ApJS*, 208, 9
- Rappaport S. et al., 2018, *MNRAS*, 474, 1453
- Rayner J. T., Toomey D. W., Onaka P. M., Denault A. J., Stahlberger W. E., Vacca W. D., Cushing M. C., Wang S., 2003, *PASP*, 115, 362
- Ricker G. R. et al., 2015, *J. Astron. Telesc. Instrum. Syst.*, 1, 014003
- Rieder S., Kenworthy M. A., 2016, *A&A*, 596, A9
- Rodríguez J. E. et al., 2017, *ApJ*, 836, 209
- Sanchis-Ojeda R. et al., 2015, *ApJ*, 812, 112
- Scaringi S. et al., 2016, *MNRAS*, 463, 2265
- Schlafly E. F., Finkbeiner D. P., 2011, *ApJ*, 737, 103
- Schlegel D. J., Finkbeiner D. P., Davis M., 1998, *ApJ*, 500, 525
- Schneider P. C., Manara C. F., Facchini S., Günther H. M., Herczeg G. J., Fedele D., Teixeira P. S., 2018, *A&A*, 614, A108
- Shapsee B. J. et al., 2014, *ApJ*, 788, 48
- Skrutskie M. F. et al., 2006, *AJ*, 131, 1163
- Stauffer J. et al., 2017, *AJ*, 153, 152
- Vacca W. D., Cushing M. C., Rayner J. T., 2003, *PASP*, 115, 389
- van Dam M. A., Le Mignant D., Macintosh B. A., 2004, *Appl. Opt.*, 43, 5458
- van Lieshout R., Rappaport S., 2017, *Disintegrating Rocky Exoplanets*. Springer International Publishing, Switzerland, p. 15
- Vanderburg A., Johnson J. A., 2014, *PASP*, 126, 948
- Vanderburg A. et al., 2015, *Nature*, 526, 546
- Vanderburg A. et al., 2016, *ApJS*, 222, 14
- Vernet J. et al., 2011, *A&A*, 536, A105
- Wizinowich P. et al., 2000, *PASP*, 112, 315
- Wright E. L. et al., 2010, *AJ*, 140, 1868
- Wyatt M. C., 2008, *ARA&A*, 46, 339
- Wyatt M. C., van Lieshout R., Kennedy G. M., Boyajian T. S., 2018, *MNRAS*, 473, 5286

This paper has been typeset from a  $\text{\TeX}/\text{\LaTeX}$  file prepared by the author.